

SPACE SAFE SYSTEMS

DISCREET MODULAR OFFICE PARTITIONS





Staff returning to the office?

With the need for some of us to start to return to work but still remain safe then this modular system can create safer working spaces for every office or work situation. It comes in a range of modular options, including freestanding, fixed or a clamp system.

Each system can be modified to fit your specific office configuration and includes a full site 'safe distance' consultation and fitting. All the panels come in easy to clean clear acrylic and using stainless steel bases to help with the battle against germs and viruses. There is also the option to brand up the panels or add additional graphics for messaging.

Key features include:

- Protect your team with our bespoke, easy-to-clean **Premium Desk Screen**.
- Made from 5mm Clear Acrylic with Stainless Steel feet & can be plain or **printed / branded**.
- Ideal for your office environment, **easily installed** without drilling.
- Our team are available to provide a site survey to ensure complete harmony with your office layout & **full installation service** is also available.



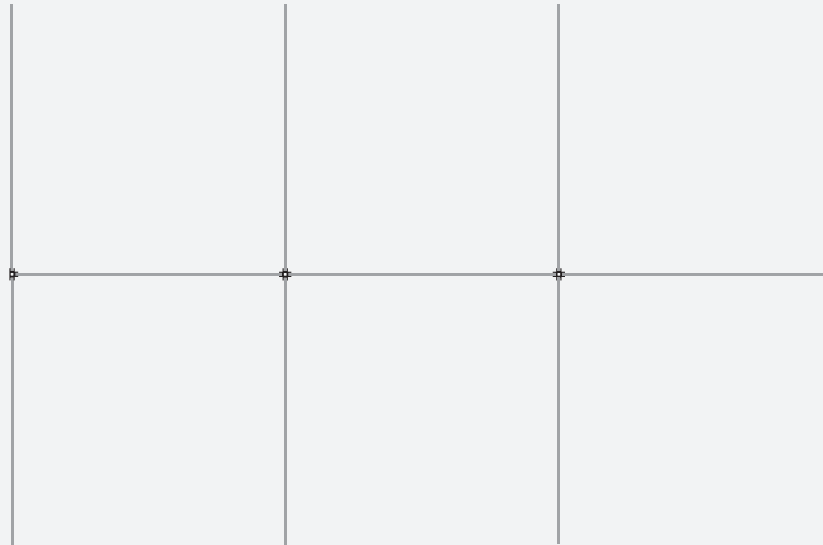


Example configurations

We can modify the size and configuration of our modular system to fit any workplace including both desktop and floor standing screens.



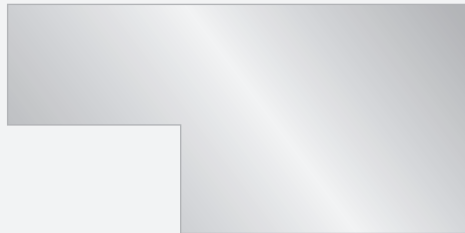
2-person desk



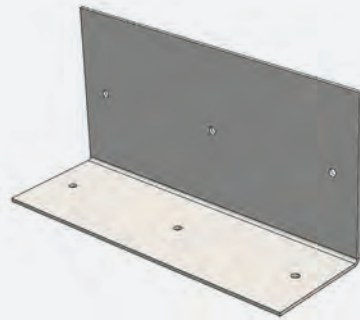
6-person desk

[SPACE SAFE SYSTEMS]
DISCREET MODULAR OFFICE PARTITIONS

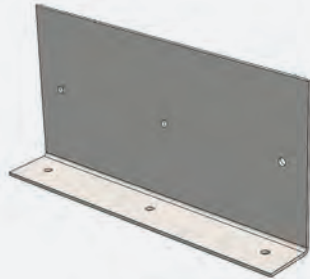
Fittings



Bespoke Acrylic Screens
We can cut to any size and shape and size



Free-standing Foot
H 200mm x L 300mm x W 100mm



Fixed Foot
H 200mm x L 300mm x W 100mm



G-Clamp Assembly
H 300mm x L 50mm x W 40mm



(1)



(2)



(3)

- 1) Corner Assembly**
H 500mm x L 50mm x W 50mm
- 2) T-Section Assembly**
H 500mm x L 50mm x W 50mm
- 3) 4-Way Assembly**
H 500mm x L 55mm x W 55mm

**[SPACE SAFE
SYSTEMS]**
DISCREET MODULAR OFFICE PARTITIONS



For further information please contact **Lion FPG** on **01902 798700** or email sales@lionfpg.co.uk